

*What's New at the*

# *James Farm Ecological Preserve*

*A Cooperative Partnership between  
Sussex County and the*



DELAWARE CENTER FOR THE

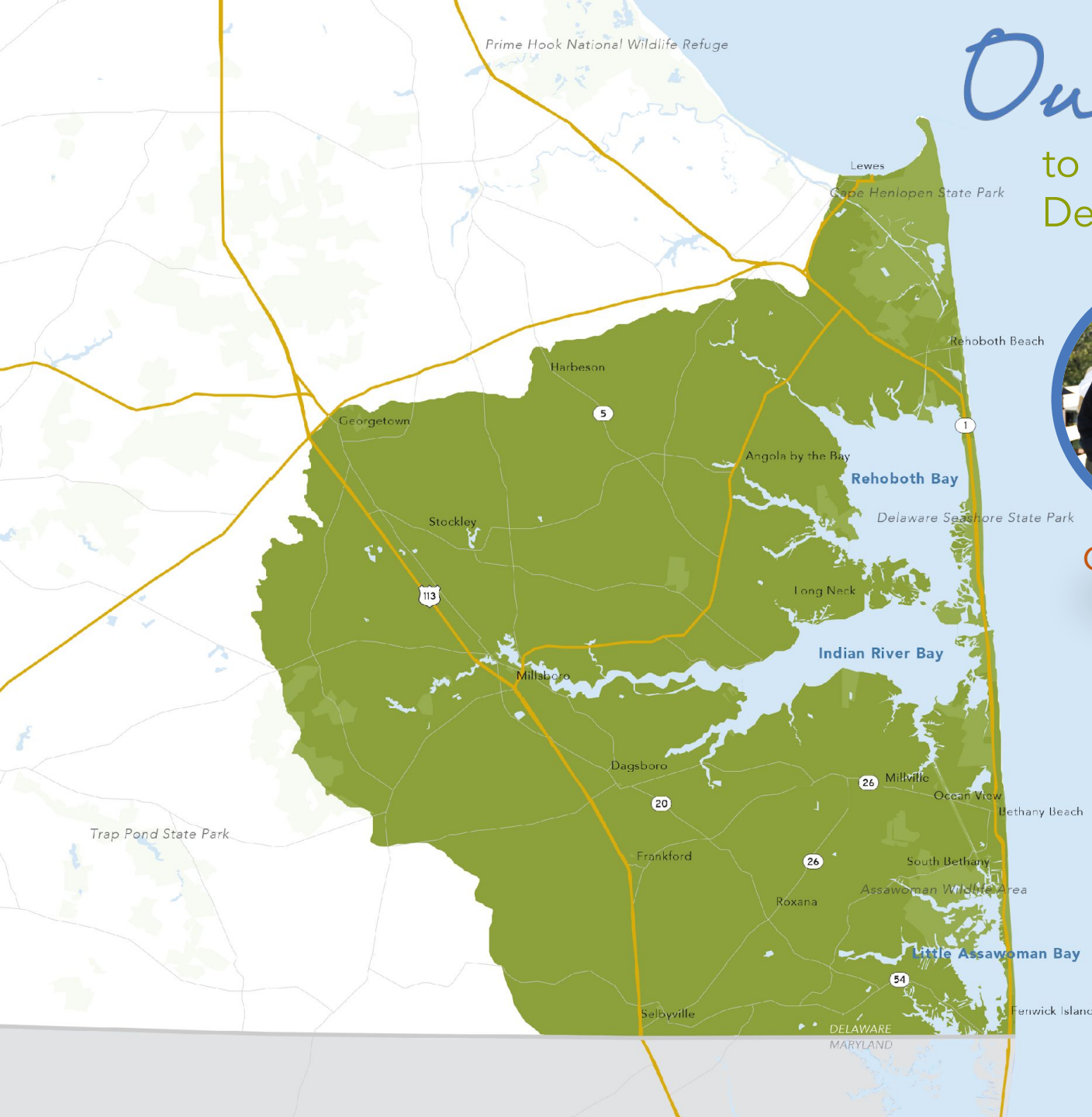
**INLAND BAYS**

Research. Educate. Restore.

# Introduction / Outline

- ❖ Description and brief history of the James Farm
- ❖ Significance of the Preserve to the Center
  - Education
  - Native Plant Sale/Family Water Fest
  - Ecobay Kayak and Paddlesports
  - Science and Restoration
  - Volunteer Program
- ❖ James Farm Master Plan





# Our Mission

to preserve, protect, and restore Delaware's Inland Bays and their watershed.



COMMUNITY  
OUTREACH



SCIENTIFIC  
RESEARCH



RESTORATION



ENVIRONMENTAL  
EDUCATION



POLICY

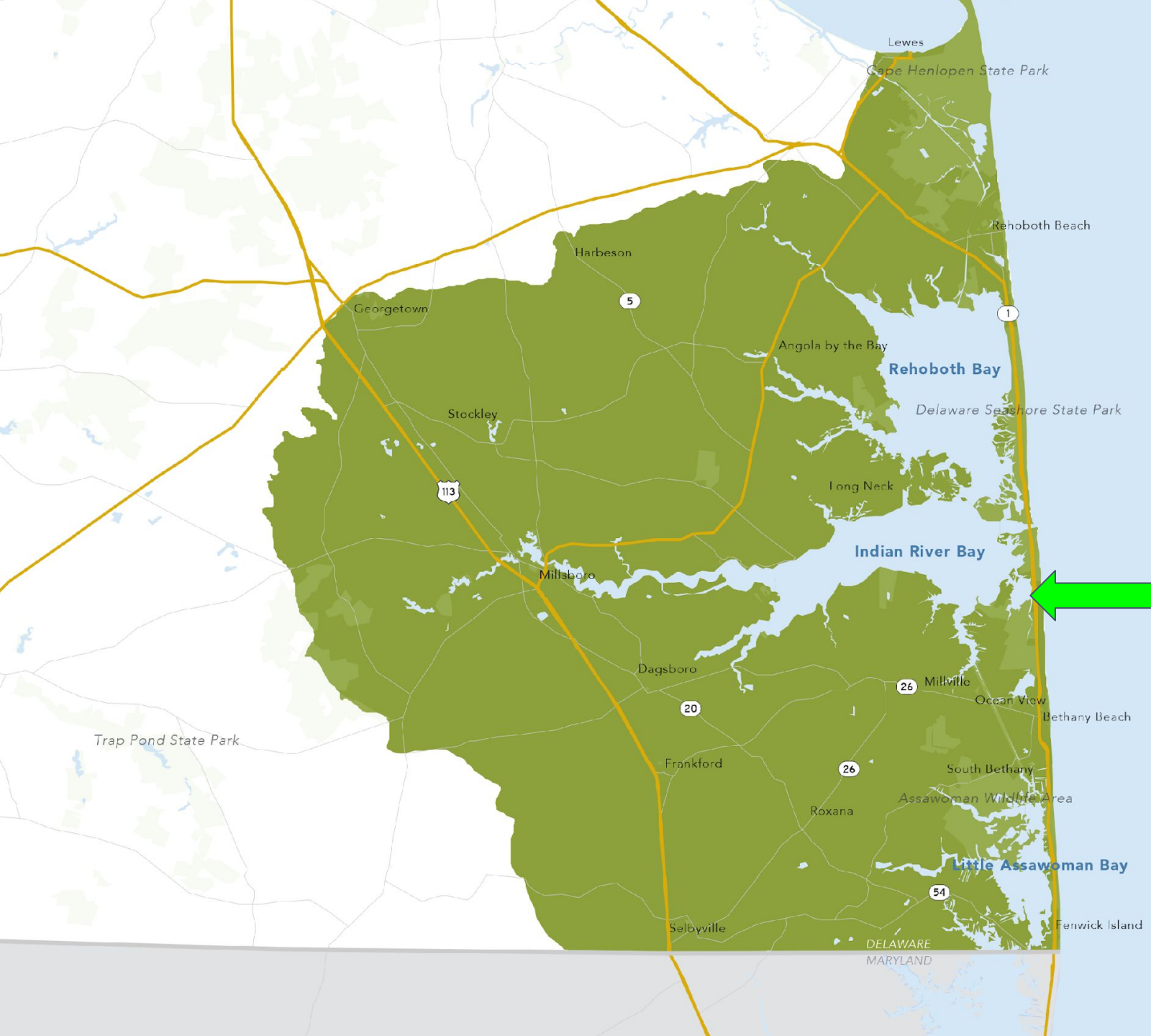


# James Farm Ecological Preserve

- ❖ 150-acre collection of diverse coastal ecosystems.
- ❖ Donated to Sussex County in 1992 by Mary Lighthipe.
- ❖ Preserved for environmental education and outdoor recreation.
- ❖ Open to the public year-round.
- ❖ Free admission.
- ❖ Over 30,000 visitors per year *and growing!*







30048 Cedar Neck Road  
Ocean View

























# Significance to the Center:

Education and Outreach Programming

Recreation Access to the Inland Bays

Science and Restoration

Volunteer Program





# Education and Outreach

- ❖ Programs are held roughly every week from April through October. (Discovery Bay)
  - ~ 2,000 attendees per year
- ❖ Youth education programs with Indian River School District, other schools
- ❖ "Journey Up the Coast"
- ❖ Native Plant Sale / Family Water Fest









# Student Estuary Exploration

## Youth Education Program

- ❖ Established in the year 2000 as a partnership with the Indian River School District. Now serves students throughout the entire watershed (and beyond!)
- ❖ Served over 21,000 students with curriculum-aligned, science-based environmental education.
- ❖ Existing amenities are inadequate, resulting in overcrowding and cancellations due to inclement weather.
- ❖ New facilities will address these issues and significantly increase the quality of programming.





# Public Programming

## Journey up the Coast

- ❖ In partnership with MCBP
- ❖ Started in 2020 in response to the pandemic, now going into the 5th year
- ❖ 2023: 40 participants
- ❖ Dates for 2024: July 2nd at JF; July 30th at Assateague State Park





# Public Programming

## Native Plant Sale/ Family Water Fest

- ❖ 2024 event - May 4th
- ❖ Co-hosted with DNREC Division of Watershed Stewardship
- ❖ History:
  - Native Plant Sale 2003-2019
  - NPS/FWF Spring '22– present
  - 2023 event ~500 people; 25 partners







# Native Plant Sale

Saturday, April 30

9am - 1pm

Here at the James Farm



DELAWARE CENTER FOR THE  
**INLAND BAYS**  
Research. Educate. Restore.

[www.inlandbays.org](http://www.inlandbays.org)







# Bay Access/Ecobay Kayak

- ❖ Provides guided paddlesport tours
- ❖ Rentals
- ❖ Kids Camps
- ❖ Makes a yearly donation to the Center (% of gross)









# Science and Restoration

- ❖ Slough's Gut
- ❖ Oyster Reef Project (historic)
- ❖ Participatory Science
  - HSC Survey
  - Citizens' Monitoring Program
- ❖ Staging Area for many S&R projects





# Slough's Gut





# Oyster Reef



CIB James Farm Ecological Preserve









**W.W.S**  
**APPROVED PLANS**  
 PERMIT #: SL-202/21  
 DATE: 08/18/2023  
 BY: Julie Molina  
 (SEE PERMIT CONDITIONS)



50 West Walsh Pool Road, Suite 6 Tuxton, PA 19341 P: 610-524-8124	
Original: 03/04/2021	Created By: PM
04/05/2021	PM
04/07/2021	PM
06/11/2021	PM
06/14/2021	PM

Delaware Center for the Inland Bays Phase 2 Oyster Reef Program Pasture Point Site	
SUBTIDAL REEF PLAN VIEW	Sheet: <b>2.0</b>

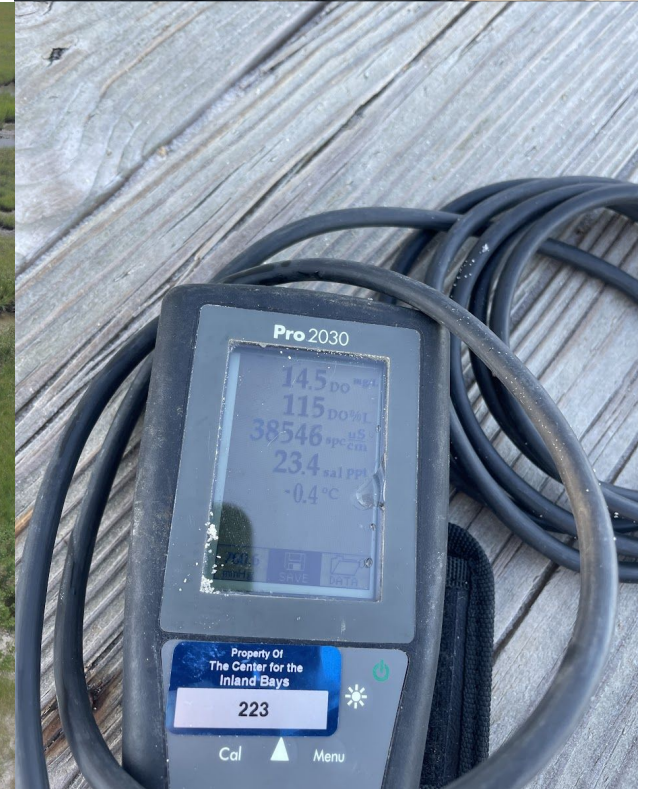






# Participatory Science

- ❖ HSC Survey
- ❖ Citizens' Monitoring Program
- ❖ Master Naturalist















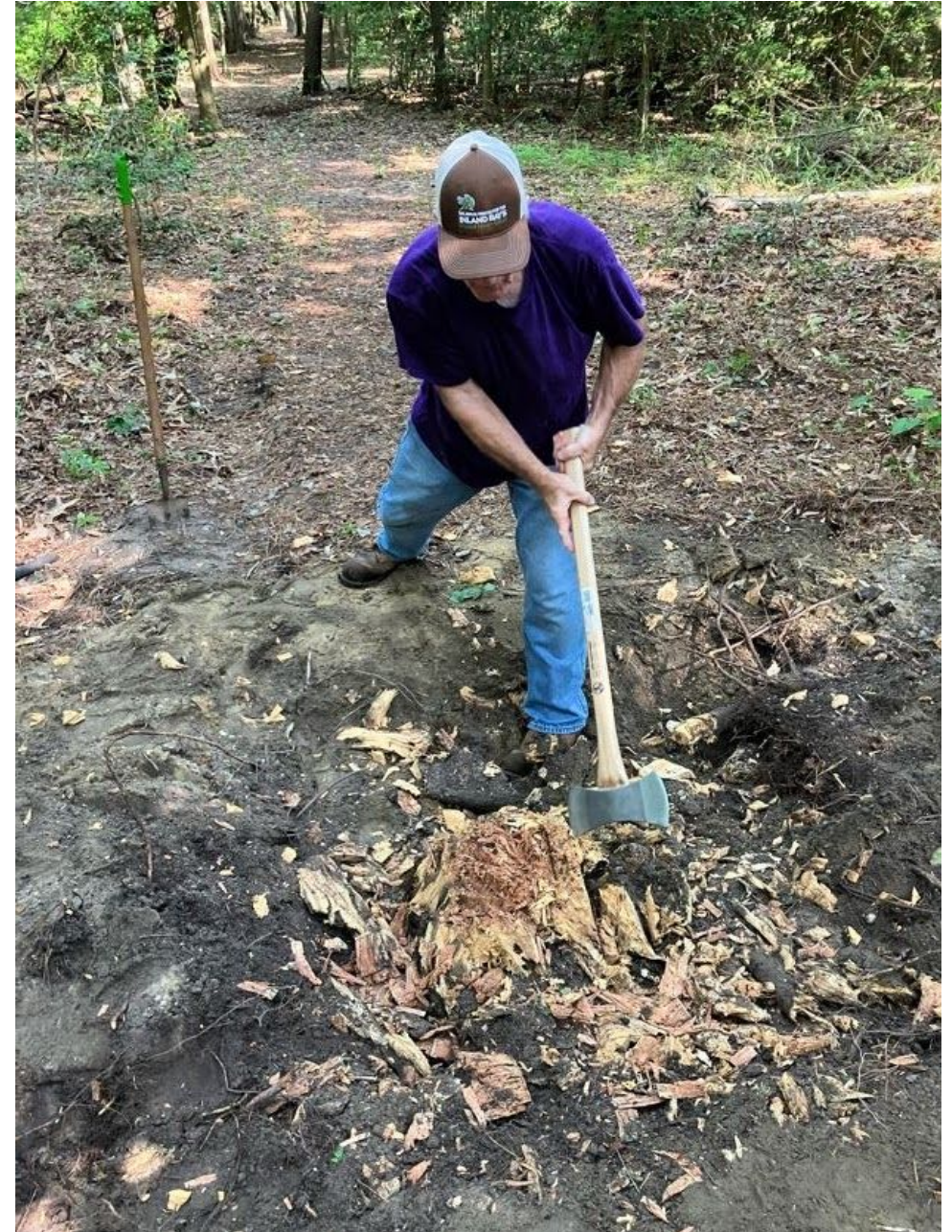


# Volunteers

## Volunteer Hours:

Maintenance and Discovery Bay-  
2100 hrs

Docent: 813 hrs









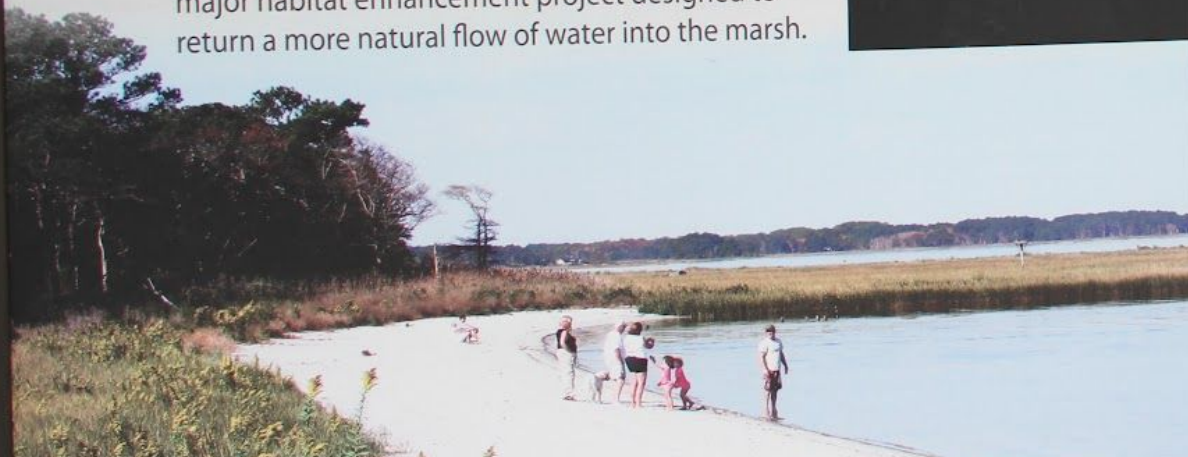
# Welcome

to the **James Farm Ecological Preserve**  
*a 150-acre oasis of wild land on Indian River Bay*

We invite you to explore three miles of hiking trails, visit the observation platforms, and cross the high marsh on the boardwalk to the Indian River Bay.

**Head down the trail to the beach.** You're going to see a great slice of the Inland Bays watershed.

**For a different view of the farm,** cross Cedar Neck Road behind you and walk the trail to the observation platform for a birds-eye-view of Slough's Gut, the site of a major habitat enhancement project designed to return a more natural flow of water into the marsh.



Joshua Rubin James and his family at their farm house, circa 1900.

**She wanted the land left 'as is, nothing other than natural...'**

You are standing on land that was for generations known as the James family farm. The patriarch, Joshua Rubin James held dear this land which he farmed at the turn of the 20th century. Rodney Short, great grandson of Joshua James, remembered Sunday dinners at the farm with his grandmother Short, and recalled a little path that ran from the house to Pasture Point where the family would harvest an abundance of 'huge' mussels right off the Point.

Following the death of the last direct descendent of the James family, in a deed signed by Mary Ansley Short Lighthipe in 1992, the land was given to Sussex County, "...to be used for recreation only, to serve the present and future inhabitants of the county...to promote and foster wildlife habitat...for environmental studies." Mary wanted the land

Preserving the natural w... James Farm  
is made possible by...  
Join the Center's efforts to... legacy alive.  
**DONATE TODAY** at...

BOOK ONLINE AT  
[ECOBAYKAYAK.COM](http://ECOBAYKAYAK.COM)  
For Questions Call 302-841-3722

- KAYAK
- STAND UP PADDLE
- KIDS CAMP
- GUIDED ECO-PADDLE
- 1 HOUR SUNSET PADDLE
- FULL MOON PADDLE
- RENTALS

#### KIDS KAYAK & PADDLE CAMP

- July 19 & 20
- July 26 & 27
- August 2 & 3
- August 9 & 10

#### FULL MOON PADDLE

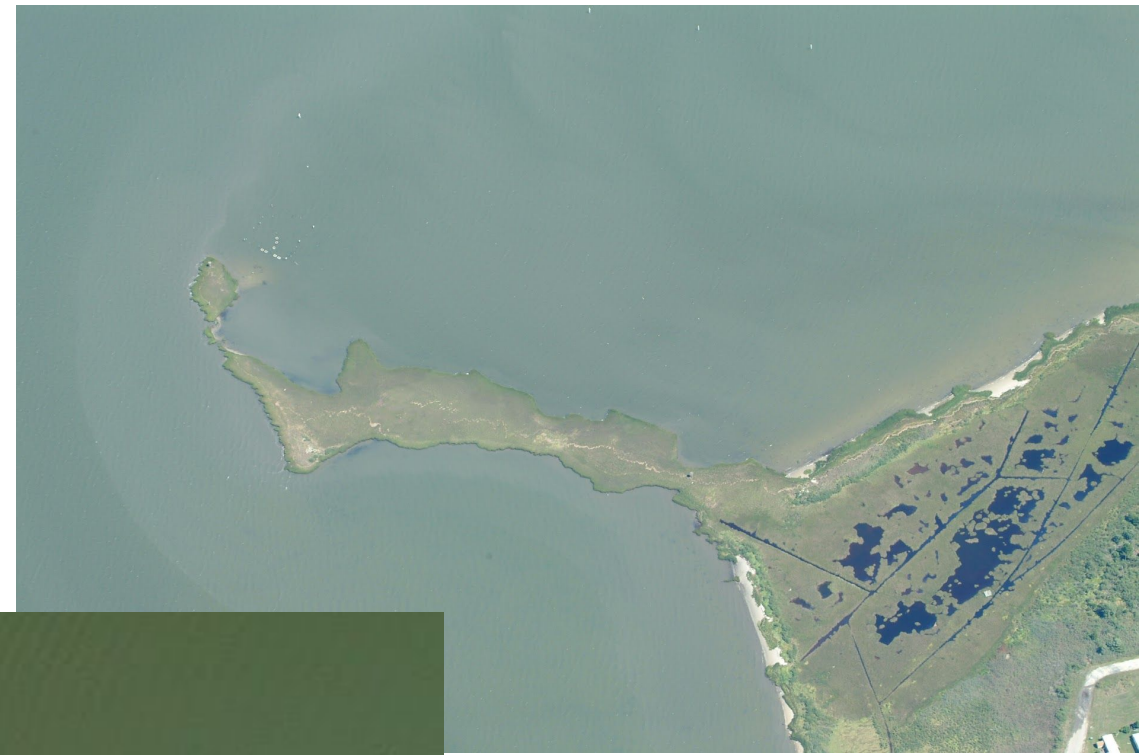
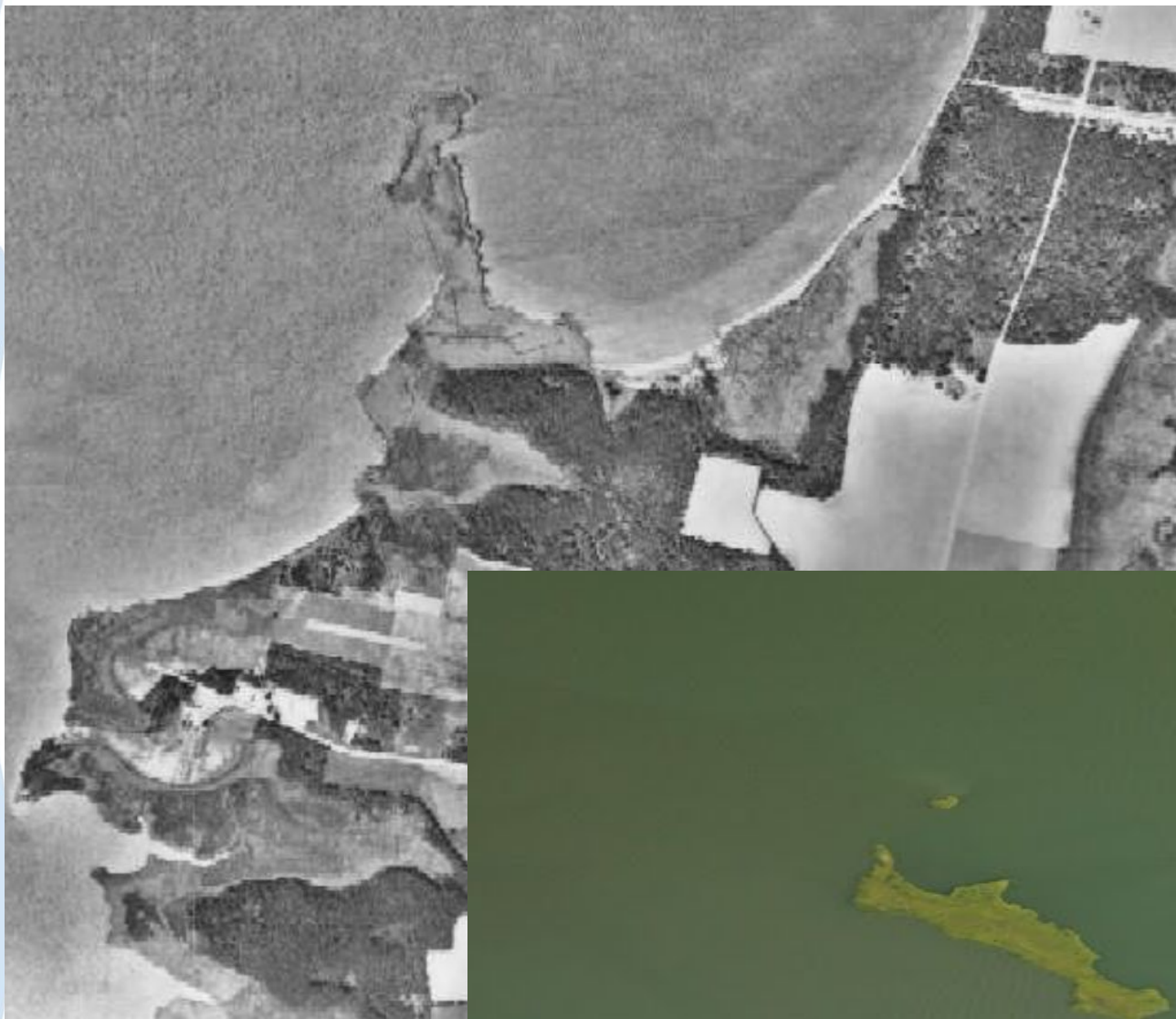
- May 26
- June 24 & 25
- July 22 & 23
- August 23 & 24
- September 30
- October 30

#### 2021 SEASON MAY - OCTOBER

Serving this beautiful place









Prepared for:



Prepared by:



October 2014

# James Farm Ecological Preserve Master Plan

*A holistic plan to improve access while addressing ecosystem challenges.*



Original Concept Drawing



# Legend

- 1. Meadow
- 2. Amphitheater
- 3. Lawn Space
- 4. Existing Pavilion
- 5. Storage
- 6. Parking
- 7. Restrooms
- 8. Existing Red Loop Trail
- 9. Deck
- 10. Specimen Tree
- 11. Event Lawn
- 12. Bioswale
- 13. Butterfly Garden
- 14. Kayak Rack
- 15. Bus Drop-Off
- 16. Entrance Sign
- 17. Existing Access Road
- 18. Arboretum Plantings













# Campus Enhancements

## Legend

1. Meadow
2. Amphitheater
3. Lawn Space
4. Equipment Storage
5. Storage
6. Parking
7. Restrooms
8. Existing Red Loop Trail
9. Deck
10. Existing Trees
11. Kayak Rack
12. Existing Access Road
13. Arboretum Plantings
14. Education Building
15. Education Storage
16. Storage

Education Building

ADA Restrooms

Outdoor Classrooms

Maintenance Storage

Workshop

Concessionaire Storage

Restoration Staging

Multi-use Gathering Space

## Not Pictured

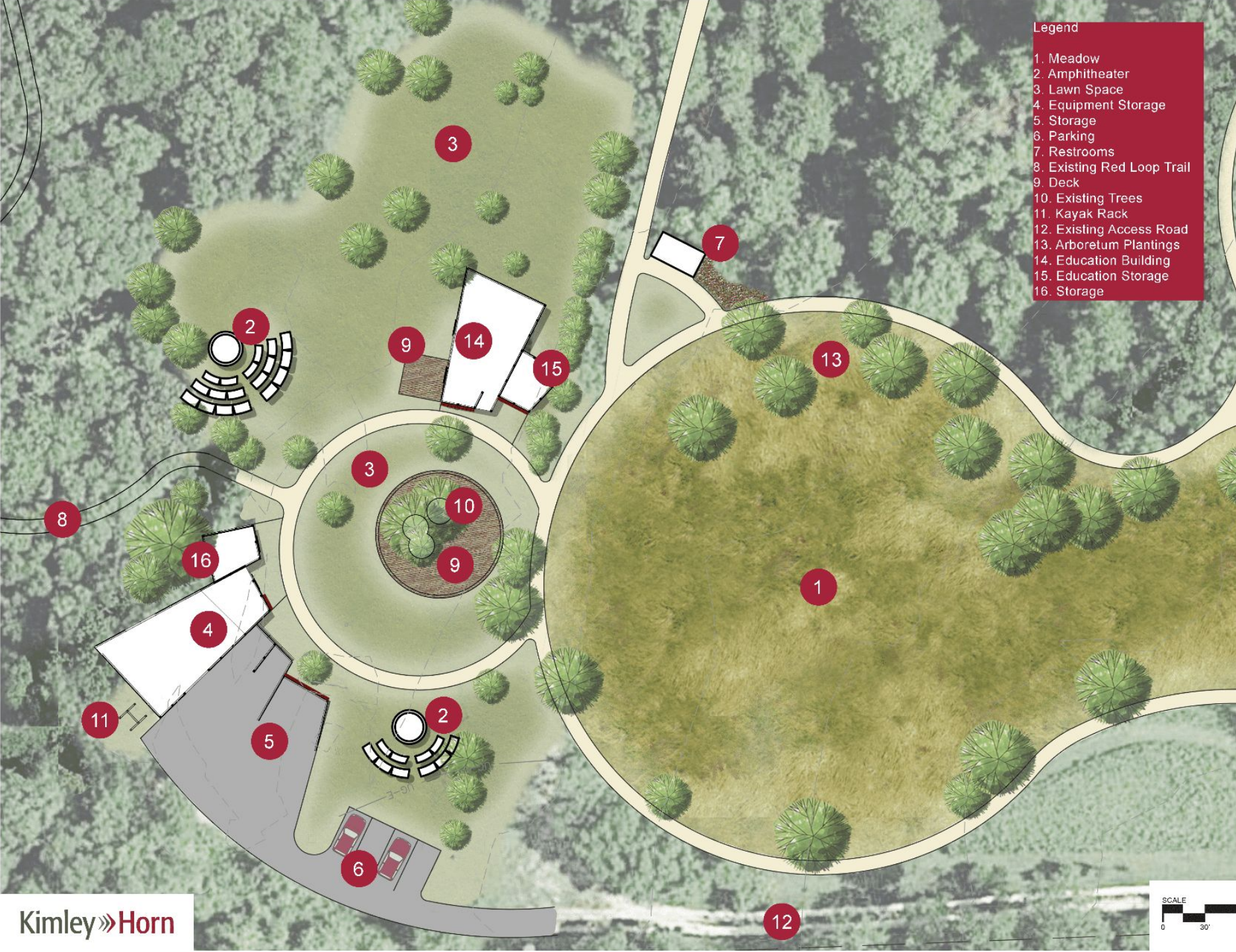
Red Trail Realignment

Boardwalk Replacement

Gateway Signage

Wayfinding System

Interpretive Signage







## SUSAN K. BALL ENVIRONMENTAL EDUCATION CENTER

OCTOBER 2023

## JAMES FARM

OCEAN VIEW, DE

Kimley»Horn





# Education Building

Three-season

70-person Capacity

Electricity

Presentation Capabilities

Sinks and Lab Space

Storage

Open Air Layout

Outdoor Classroom

Catering Kitchen

## Uses

SEE Program

Intergenerational Programming

Volunteer Training

Special Events



# Maintenance Area

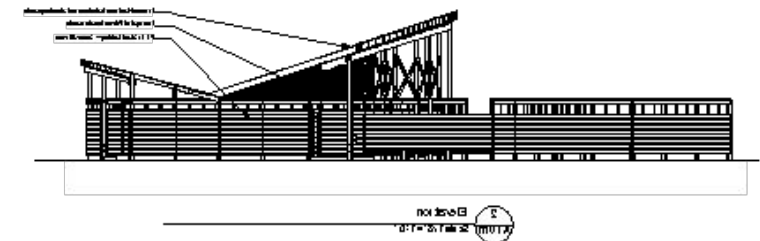
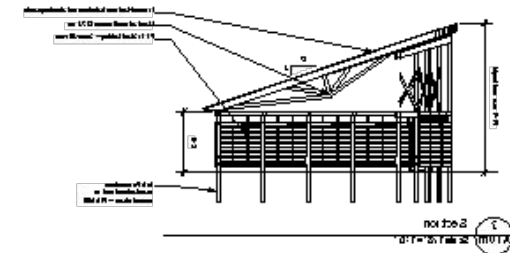
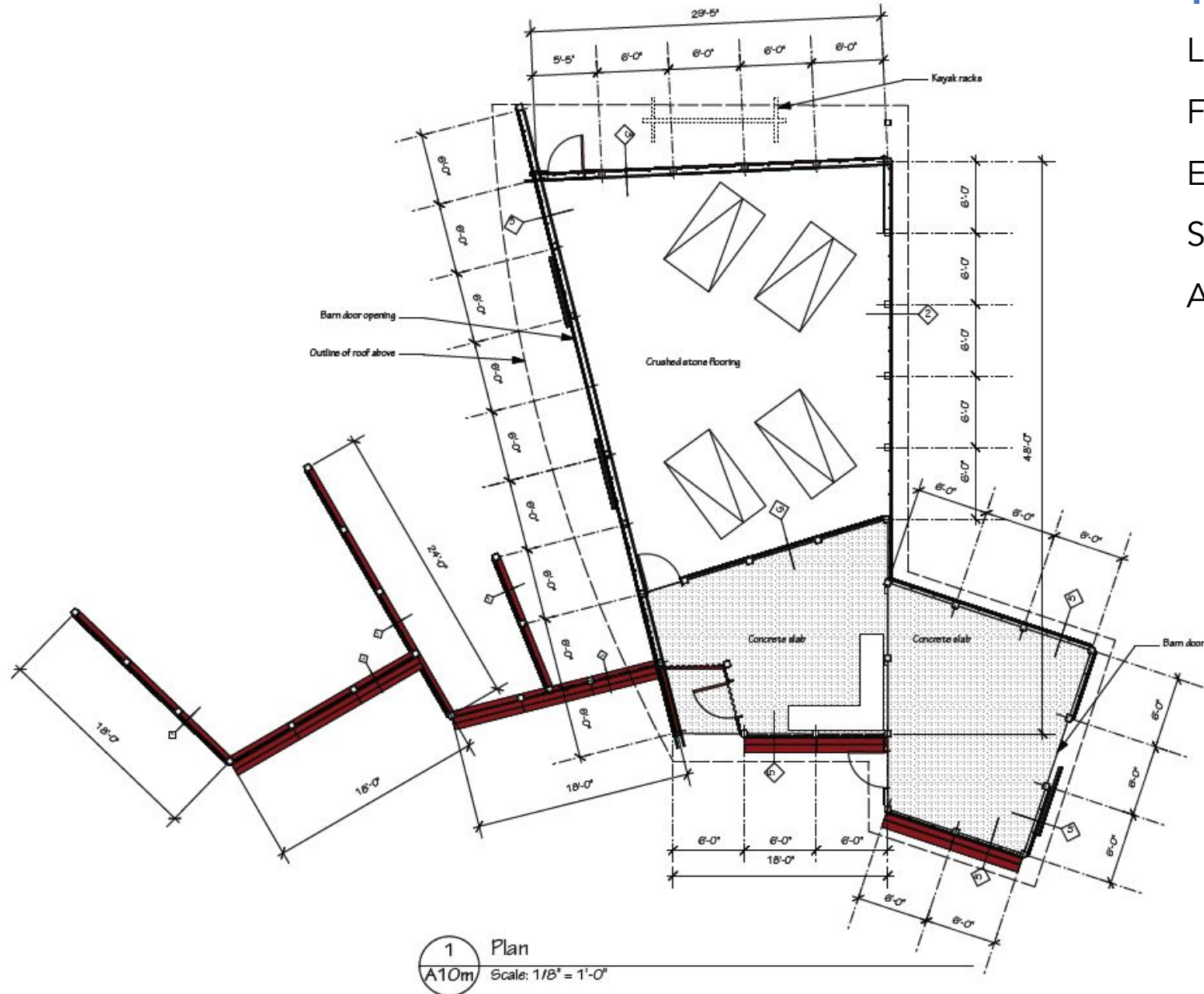
Large Equipment Storage

Fully-Equipped Workshop

Ecotour Concessionaire Storage

Science and Restoration Staging Area

Access Road for Staff and Emergency Vehicles











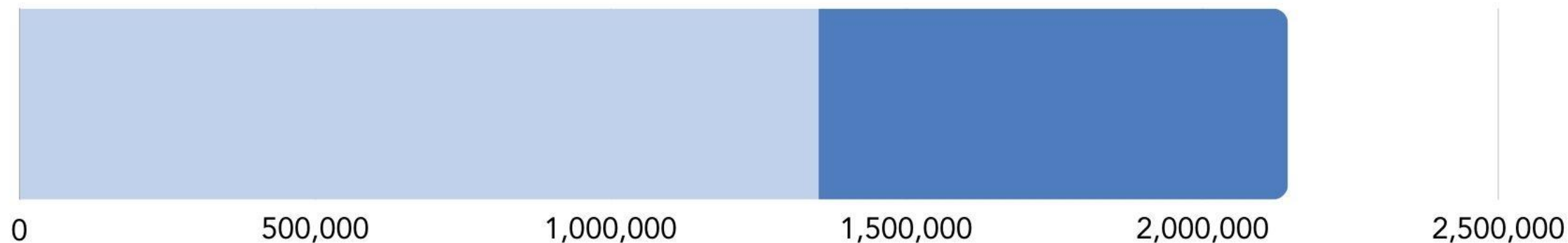


## PHASE 2: CAMPUS CONSTRUCTION COST

**\$2,144,500**

RAISED TO DATE

**\$1,350,702**



### FUNDING SOURCES:

Sussex County Council  
State of Delaware  
U.S. Environmental Protection Agency

Foundations  
In-Kind Goods and Services  
Private Donations



## How can STAC help?

- ❖ Consider a donation to the project
- ❖ Connect us with prospective donors and funders
- ❖ Talk up the project in the community
- ❖ Once work gets underway, participate in project milestones



A full-page background image showing a sunset over a calm body of water. The sun is a bright orange orb on the horizon, with its light reflecting across the water's surface. The sky is filled with soft, wispy clouds in shades of orange, yellow, and blue. In the distance, a small figure of a person is visible in the water, and a dark shoreline with some structures is on the left.

# Thank You!

Bob Collins  
Programs and Facilities Manager  
[jamesfarm@inlandbays.org](mailto:jamesfarm@inlandbays.org)

Anna Fagan  
Deputy Director  
[afagan@inlandbays.org](mailto:afagan@inlandbays.org)