

Information Gathering and synthesizing subcommittee:

Oyster Aquaculture Lease Area Siting Draft 2.0



Oyster Aquaculture Tiger Team

Barren Bottom Classification

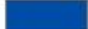
- Rhode Island considers >3 clams per square meter to be the dividing line between productive vs barren bottom suitable for aquaculture use.
 - Unproductive bottom is also an odd definition but the unwritten criteria that we use is that a commercially viable bottom would have 10 hard clams per square meter.
 - Five per square meter is a recreationally decent area but it could still be leased for aquaculture.
- Virginia does not have any specific shellfish density standard
 - Use public verses lease designation
- Maryland does not have any specific shellfish density standard



Draft


Inland Bay Exclusion Areas Based upon Clam Densities

Legend

 Clam Densities of 3 or greater (clam / m sq)

Draft

2.5 1.25 0 2.5 Miles



3 1.5 0 3 Kilometers




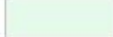
**Oyster Aquaculture
Tiger Team**





Area Available for Oyster Aquaculture: Rehoboth Bay

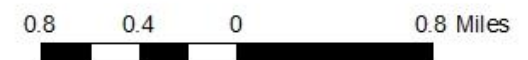
Legend

-  Potential Oyster Aquaculture Areas
-  Areas outside of the OA exclusions

Total Area:

319 Acres

3.4% of the total Rehoboth area



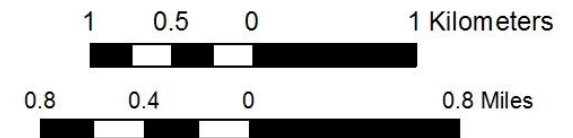
**Oyster Aquaculture
Tiger Team**



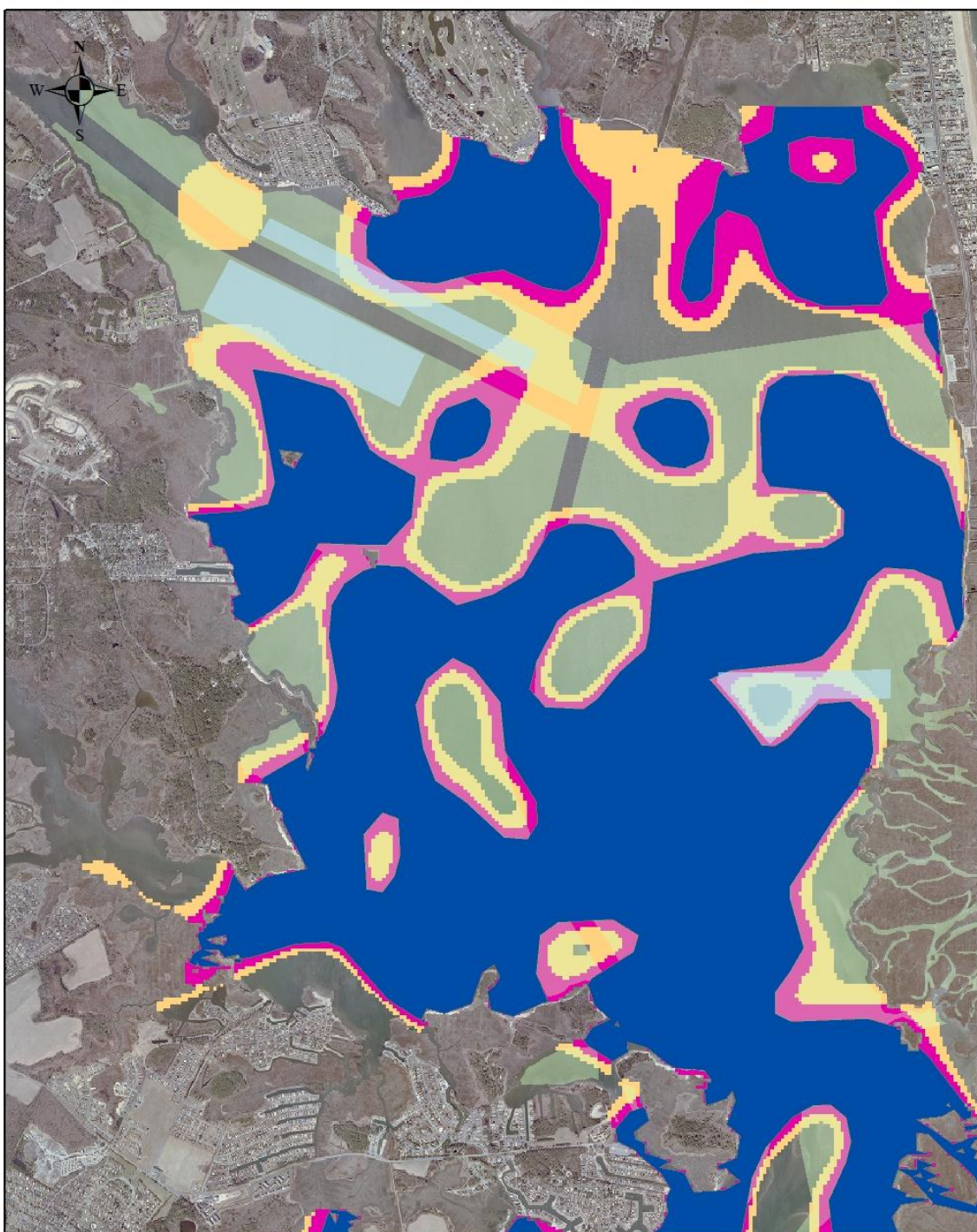
Area Available for Oyster Aquaculture: Rehoboth Bay

Legend

- Potential Oyster Aquaculture Areas
- Areas outside of the OA exclusions
- Clam Densities of 3 or greater



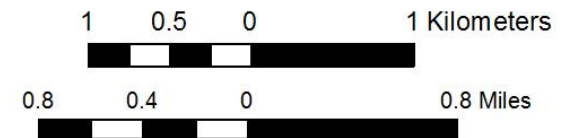
**Oyster Aquaculture
Tiger Team**



Area Available for Oyster Aquaculture: Rehoboth Bay

Legend

- Potential Oyster Aquaculture Areas
- Areas outside of the OA exclusions
- Clam Densities of 3 or greater
- Clam Densities of 2 or greater (clam / m sq)
- Clam Densities of 1 or greater (clam / m sq)






**Oyster Aquaculture
Tiger Team**



Area Available for Oyster Aquaculture: Rehoboth Bay

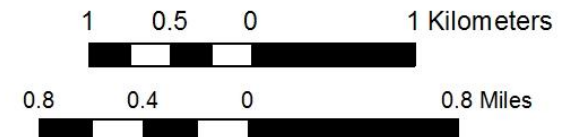
Legend

-  Potential Oyster Aquaculture Areas d2
-  Potential Oyster Aquaculture Areas
-  Areas outside of the OA exclusions

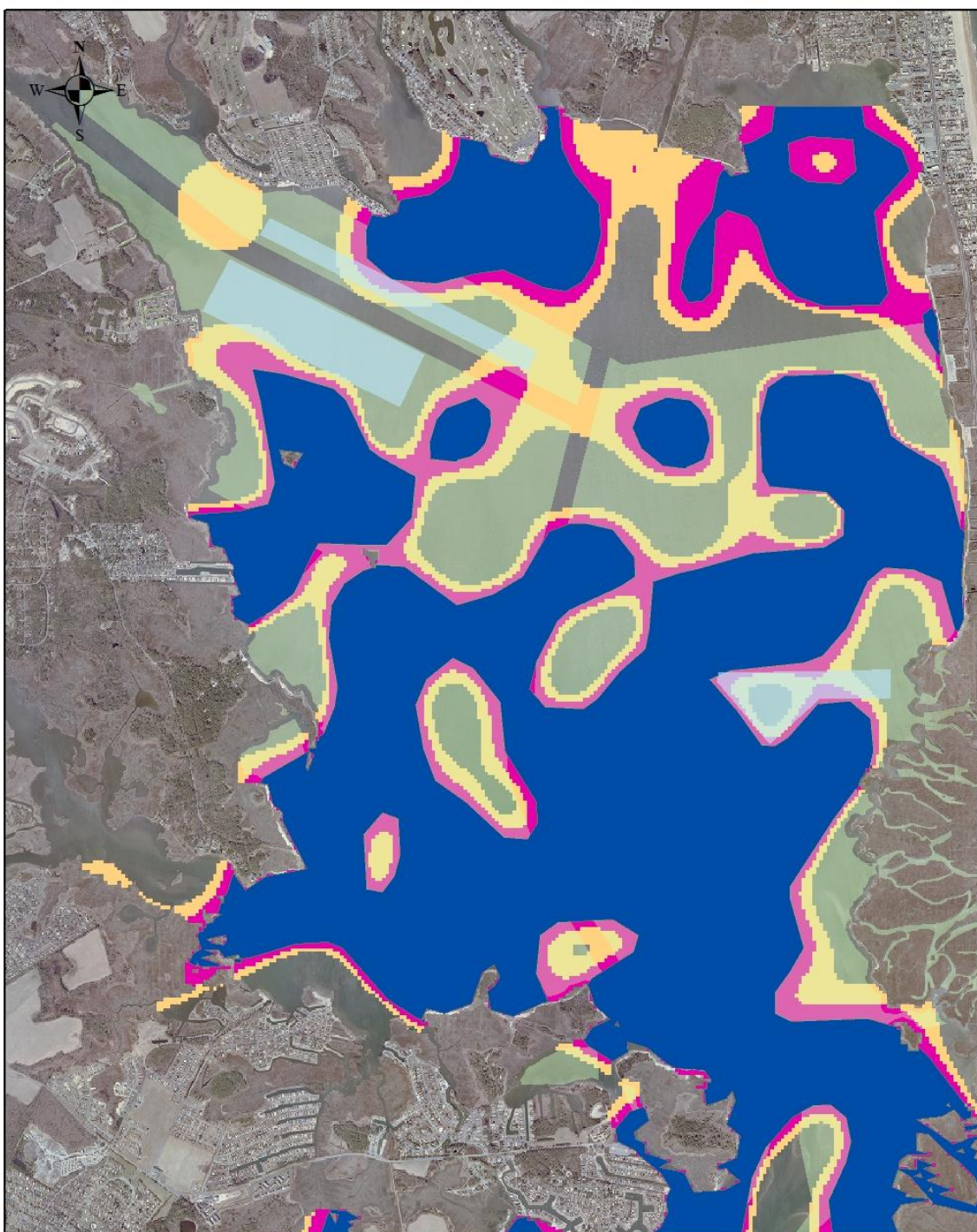
Total Area:

174 Acres

1.9% of the total Rehoboth Bay area



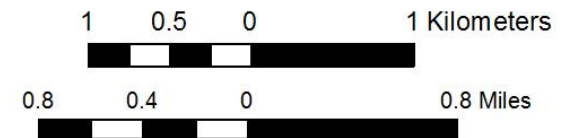
**Oyster Aquaculture
Tiger Team**



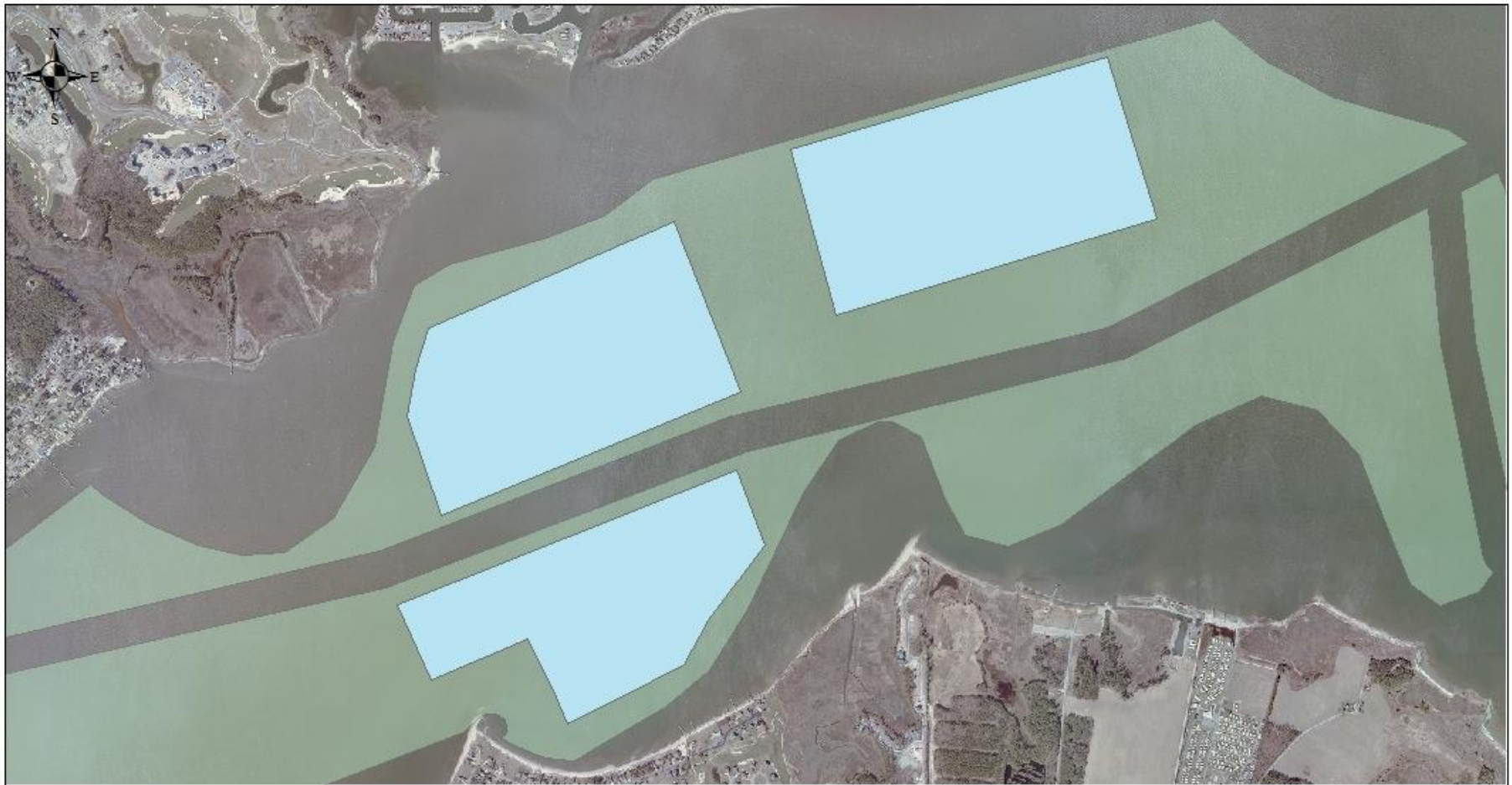
Area Available for Oyster Aquaculture: Rehoboth Bay

Legend


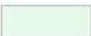
- Potential Oyster Aquaculture Areas
- Areas outside of the OA exclusions
- Clam Densities of 3 or greater
- Clam Densities of 2 or greater (clam / m sq)
- Clam Densities of 1 or greater (clam / m sq)



**Oyster Aquaculture
Tiger Team**



Legend

-  Potential Oyster Aquaculture Areas
-  Areas outside of the OA exclusions

Area Available for Oyster Aquaculture: Indian River Bay



Total Area:

560 Acres




5.9% of the total Indian River area

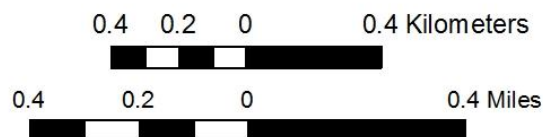
Oyster Aquaculture Tiger Team



Area Available for Oyster Aquaculture: Indian River Bay

Legend

-  Potential Oyster Aquaculture Areas
-  Areas outside of the OA exclusions
-  Clam Densities of 3 or greater



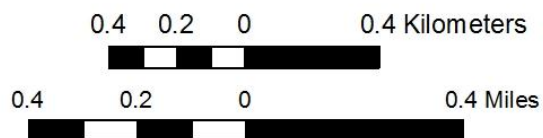
**Oyster Aquaculture
Tiger Team**



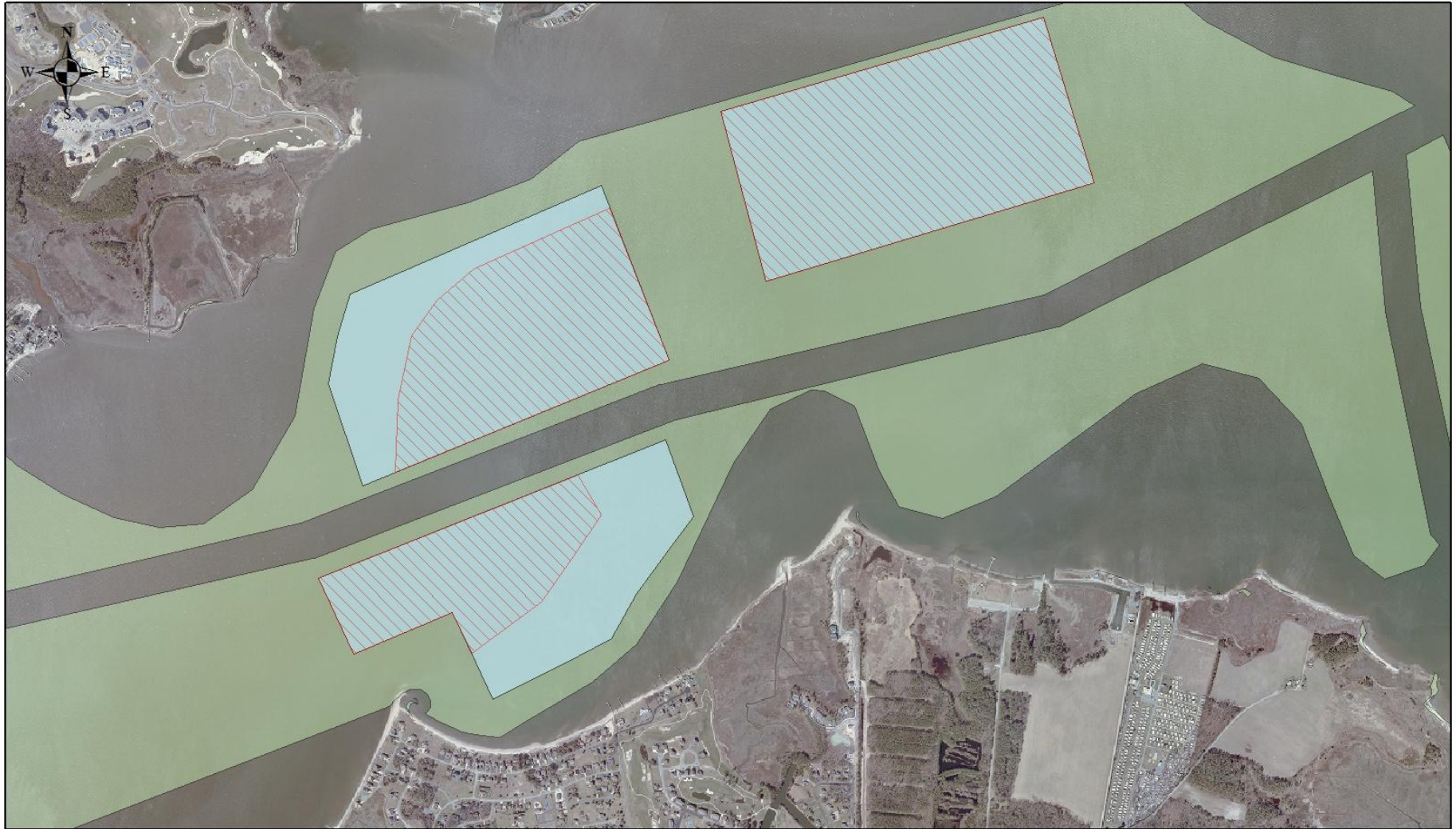
Legend

- Potential Oyster Aquaculture Areas
- Areas outside of the OA exclusions
- Clam Densities of 3 or greater
- Clam Densities of 2 or greater (clam / m sq)
- Clam Densities of 1 or greater (clam / m sq)

Area Available for Oyster Aquaculture: Indian River Bay






**Oyster Aquaculture
Tiger Team**



**Area Available for Oyster
Aquaculture:
Indian River Bay**

Legend

-  Potential Oyster Aquaculture Areas d2
-  Potential Oyster Aquaculture Areas
-  Areas outside of the OA exclusions

0.4 0.2 0 0.4 Kilometers

0.4 0.2 0 0.4 Miles

Total Area:

423 Acres

4.5% of the total Indian River area

**Oyster Aquaculture
Tiger Team**

ed by lighted or

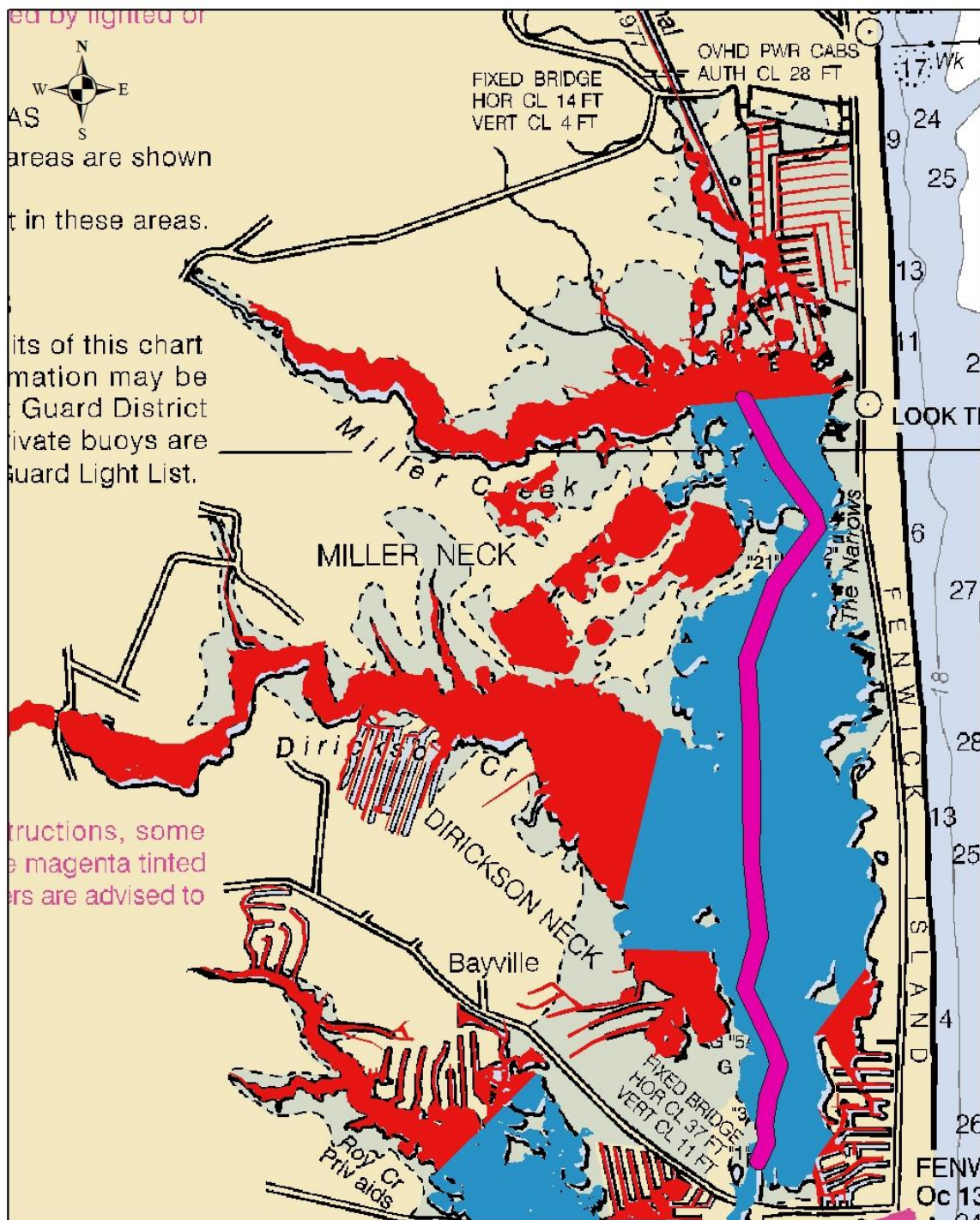


areas are shown

t in these areas.

its of this chart
mation may be
Guard District
ivate buoys are
Guard Light List.

structions, some
e magenta tinted
ers are advised to



Assawoman Bay Exclusion Areas

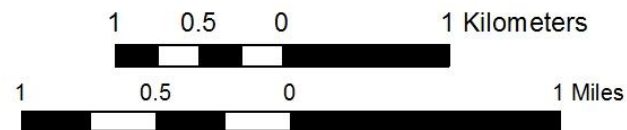
Legend

 Assawoman Navigational Buffer (150 ft)

Shellfish Harvesting Areas

STATUS

-  Prohibited
-  Prohibited (Hatchery)
-  Seasonal Closures
-  Open



Oyster Aquaculture Tiger Team

ed by lighted or

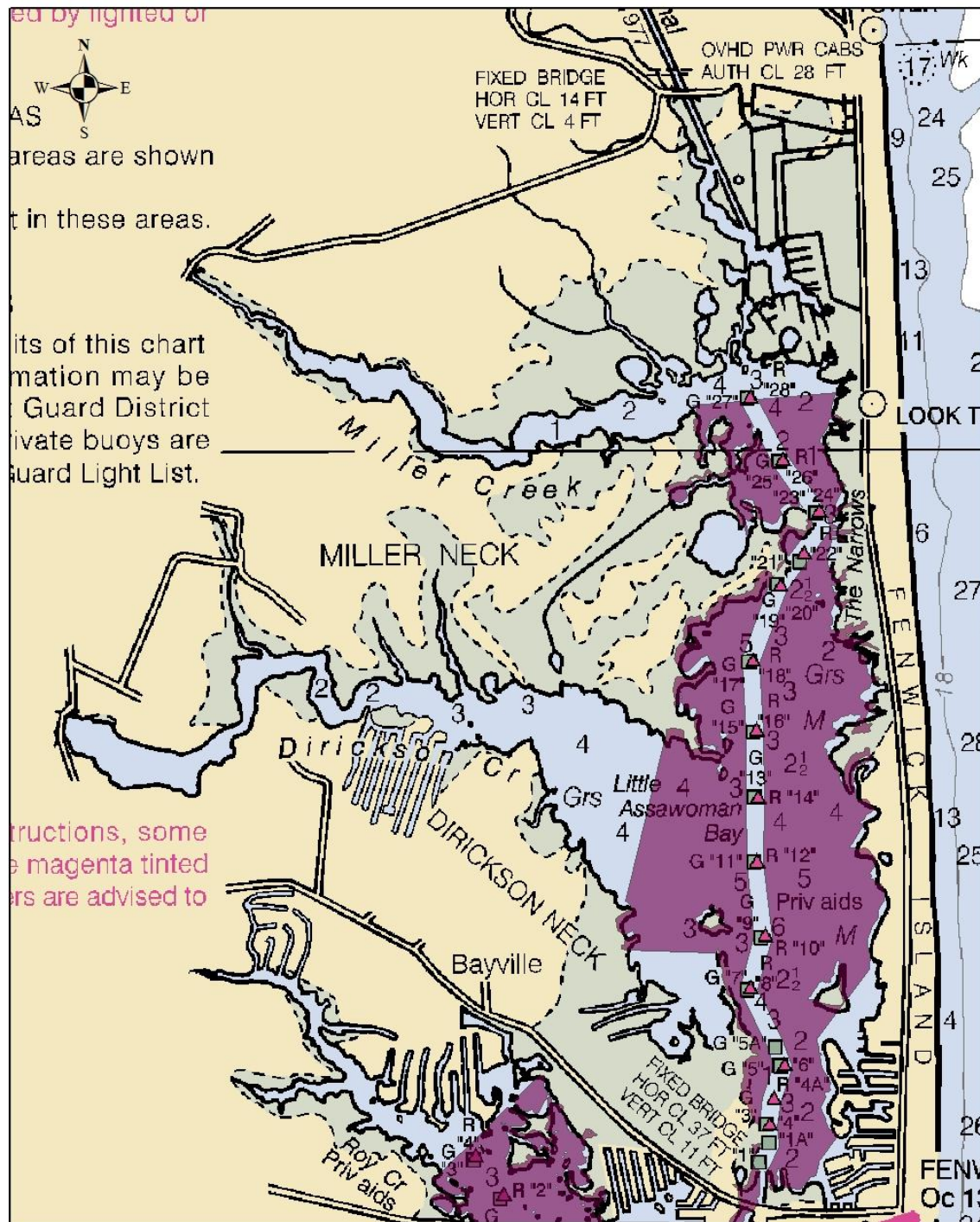


AS
areas are shown

t in these areas.


its of this chart
mation may be
Guard District
ivate buoys are
Guard Light List.

structions, some
e magenta tinted
ers are advised to



Assawoman Bay Potential Aquaculture Lease Areas

Legend

 Areas outside of the OA exclusions



Oyster Aquaculture Tiger Team

ed by lighted or

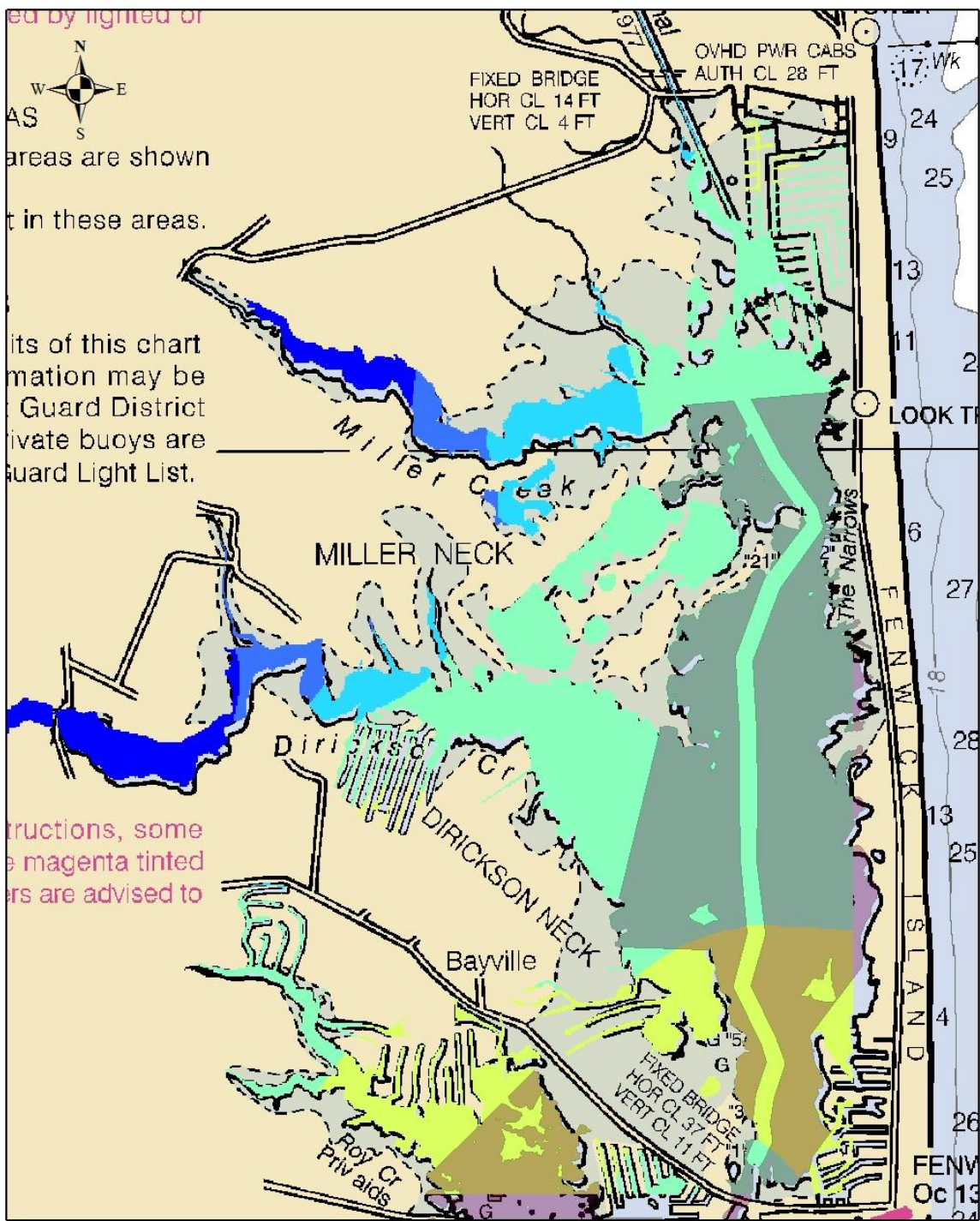


areas are shown

t in these areas.

its of this chart
mation may be
Guard District
ivate buoys are
Guard Light List.

structions, some
e magenta tinted
ers are advised to



Assawoman Bay Potentail Aquaculture Lease Area

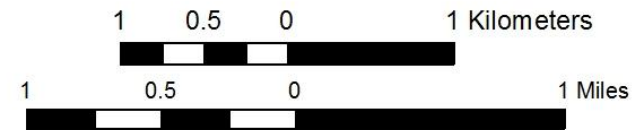
Legend

Areas outside of the OA exclusions

Mean Salinity (1998 - 2008)

Parts Per Thousand (ppt)

- 7.2 - 14.5
- 14.6 - 18.8
- 18.9 - 22.3
- 22.4 - 24.6
- 24.7 - 26.7
- 26.8 - 27.6
- 27.7 - 29.8
- 29.9 - 31.5



Oyster Aquaculture Tiger Team