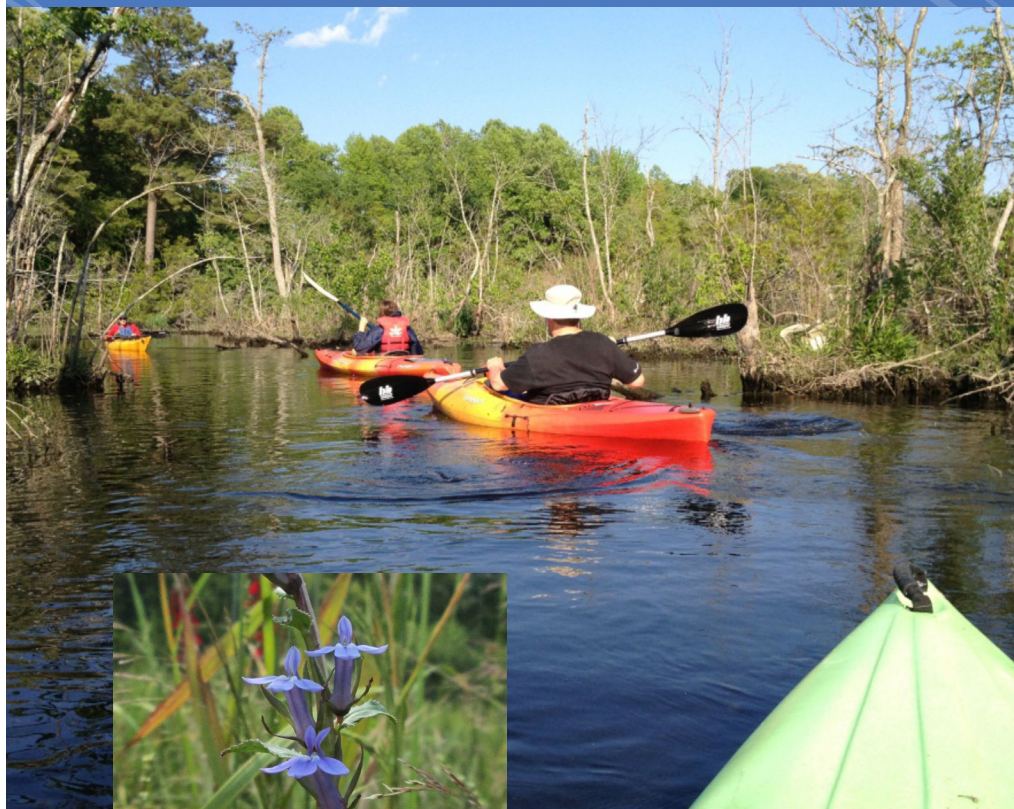


ABOUT YOUR CREEK

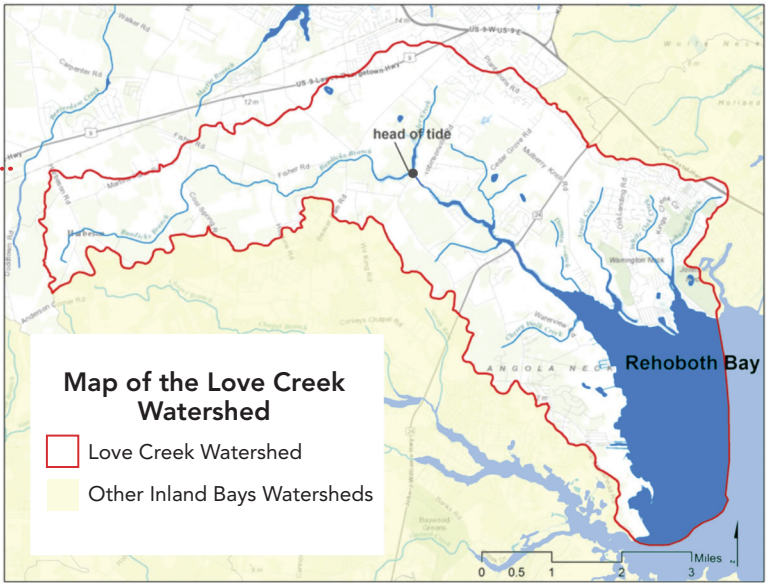
Love Creek on Rehoboth Bay



DELAWARE CENTER FOR THE
INLAND BAYS
Research. Educate. Restore.



Love Creek flows into Rehoboth Bay from the west, and its watershed encompasses about 25 square miles.

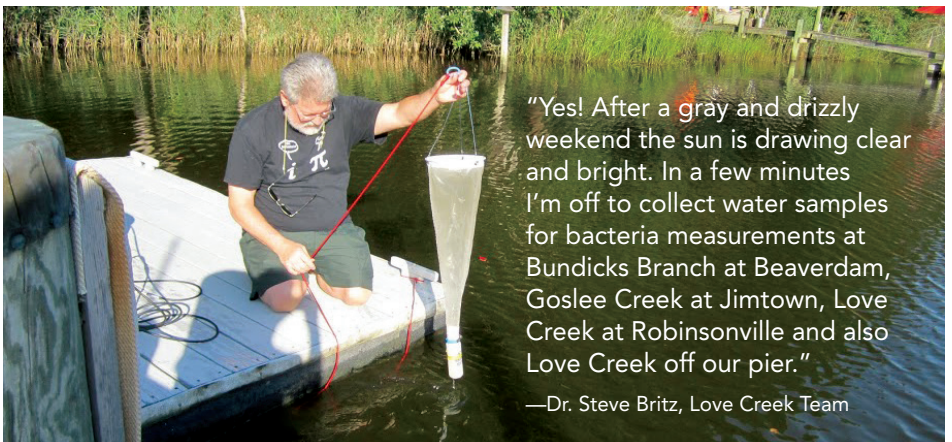


Traveling up the creek from Rehoboth Bay to the Route 24 bridge, the creek is navigable to power boats and is a popular destination for fishing, crabbing and boating. Many communities line the creek. But paddle west from the Route 24 bridge and it is another world; the creek is fringed with salt marsh and much of the shoreline is forested.

But times they are a-changing...

Love Creek and its tributaries are currently listed as 'impaired' under the federal Clean Water Act for bacteria and nutrient pollution. Pollution sources include agricultural

and residential fertilizers, stormwater runoff from residential and commercial development, and wastewater disposal including septic systems.





The State of Love Creek report is a compilation of environmental data about Love Creek and its watershed. It was published to provide communities and concerned citizens like you with information you can use to help restore and protect your creek.

To read the full report, visit inlandbays.org/lovecreekreport

LAND USE: Still intensively used by agriculture, the Love Creek watershed is rapidly developing increasing traffic and the need for infrastructure. Loss of forests and marshes along the shoreline of the creek and its tributaries could have a significant impact on the health of the creek.

SEPTIC SYSTEMS: Even properly maintained septic systems leach nutrients into the groundwater. Converting to central sewer would provide a much higher level of sewage treatment.

NUTRIENT LOAD: Love Creek has too much nitrogen and phosphorus. Excess nutrients can cause an overgrowths of algae, low oxygen levels, and cloudy water. Nitrogen is the major pollutant in Love Creek.

DISSOLVED OXYGEN: Dissolved oxygen levels in the creek remain a concern, both for recreational use and for the health of plant and animal life.

BACTERIA POLLUTION: levels are too high and the overall trend indicates that it is getting worse. Love Creek water exceeds the safe standard roughly 20% of the time during the swimming season.



YOU CAN HELP LOVE CREEK

GET INFORMED!

- **Read the State of Love Creek Report** and get the word out! Share what you know with neighbors and your community association. inlandbays.org/lovecreekreport
- **Schedule a presentation** of the Love Creek Report with your homeowners association or community group. To schedule a date contact outreach@inlandbays.org
- **Get connected** on the Friends of Love Creek Facebook page and the On and Around Love Creek blog.

STAND UP FOR LOVE CREEK!

- **Ask questions**—get answers! Attend public hearings about projects and issues that will impact Love Creek.
- To **stay informed**, “Like” the Friends of Love Creek Facebook page.
- **Vote for clean water.** Vote for clean water-let your elected representatives know you support clean water initiatives.

IN YOUR BACKYARD

- **Fertilize less or not at all.** The nutrients in fertilizer can enter the creek in stormwater or in groundwater polluting the creek and causing algal blooms and lower oxygen levels. Get information at delawarelivablelawns.org
- **Plant native plants.** A win-win for you and for Love Creek. Because they are acclimated to our climate and soils, once they are established they need less tending from you and they support native wildlife.
- **Create a backyard habitat.** Learn how at delawarenaturalsociety.org/CertifiedWildlifeHabitat

IN YOUR COMMUNITY

- **Keep stormwater...and all it carries with it...out of the Creek.**
- **Pick up pet waste.**
- **Work to protect forested buffers and open space** along Love Creek and its tributaries.



DELAWARE CENTER FOR THE
INLAND BAYS
Research. Educate. Restore.

Get on board with the Bays!

inlandbays.org
Rehoboth | Indian River | Little Assawoman

Delaware Center for the Inland Bays
39375 Inlet Road
Rehoboth Beach, DE 19971

302-226-8105
inlandbays.org