



DELAWARE CENTER FOR THE
INLAND BAYS
Research. Educate. Restore.

Working Together to Protect Open Space

Michelle Schmidt
Director of Conservation & Watershed
Planning
Delaware Center for the Inland Bays

Importance of Land Protection



Wildlife Habitat



Clean Water



Outdoor Recreation



Scenic Beauty



Mental & Physical Health



2021 Inland Bays CCMP

Living with a
Changing
Climate

Clean
Waters:
Healthy
Agricultural
Landscapes

Clean
Waters:
Reducing
Pollution
from the
Developed
Landscape

Healthy Bay
Ecosystems:
Protect and
Restore
Thriving
Habitats

Coordinated
Land and
Water Use
Decisions

Education,
Outreach,
Marketing

**Education, Outreach, Science & Research,
Restoration, Partnerships and Public Policy.**

Coordinated Land & Water Use Decisions
CM 2-4: Increase protection of land through acquisition or easement for the purpose of conservation and restoration.



Funding



Partnerships



Property Identification

Sussex Conservation Partnership

Delaware Land Protection Coalition

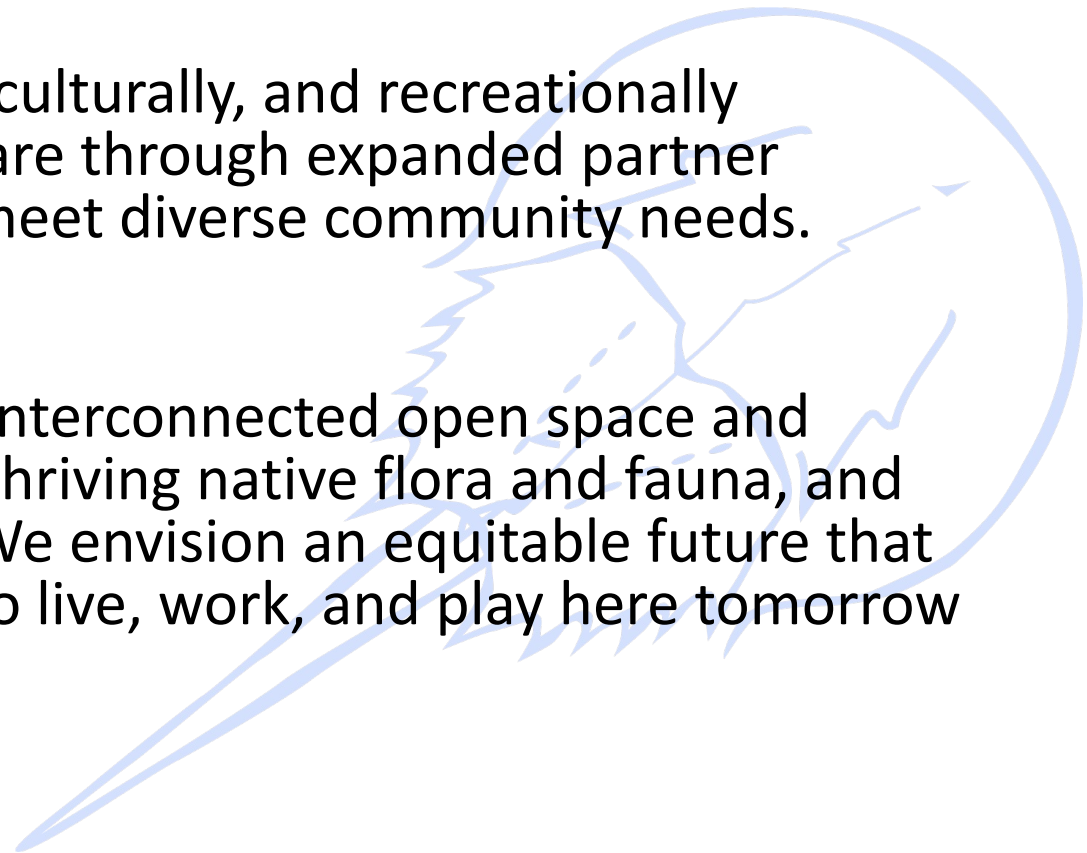
Delaware Land Protection Coalition

Mission—

Protect the most ecologically, culturally, and recreationally important resources in Delaware through expanded partner collaboration and funding to meet diverse community needs.

Vision—

We envision a Delaware with interconnected open space and productive land, clean water, thriving native flora and fauna, and resilience to climate change. We envision an equitable future that enriches the lives of those who live, work, and play here tomorrow and for generations to come.



DLPC Membership

- DE Center for Inland Bays
- Delaware Nature Society
- Ducks Unlimited
- Delaware Wild Lands
- Kent County Conservancy
- Native Species Council
- League of Women Voters in Delaware
- Delaware Ornithological Society
- Sussex 2030
- Sussex Preservation Coalition
- The Nature Conservancy
- New Castle County Public Works
- Mt. Cuba
- Land Trust Alliance
- Preservation Delaware
- Sussex County Land Trust
- Delaware Native Species Council
- Nanticoke River Watershed Conservancy
- Delaware Audubon

Goals



Increase the amount of state and county level funding dedicated to land protection.



Implement creative solutions that enable NGO partners to assist the state in protecting critical lands throughout the state.



Leverage state and county funding with private funds to acquire land.

Delaware Open Space Program

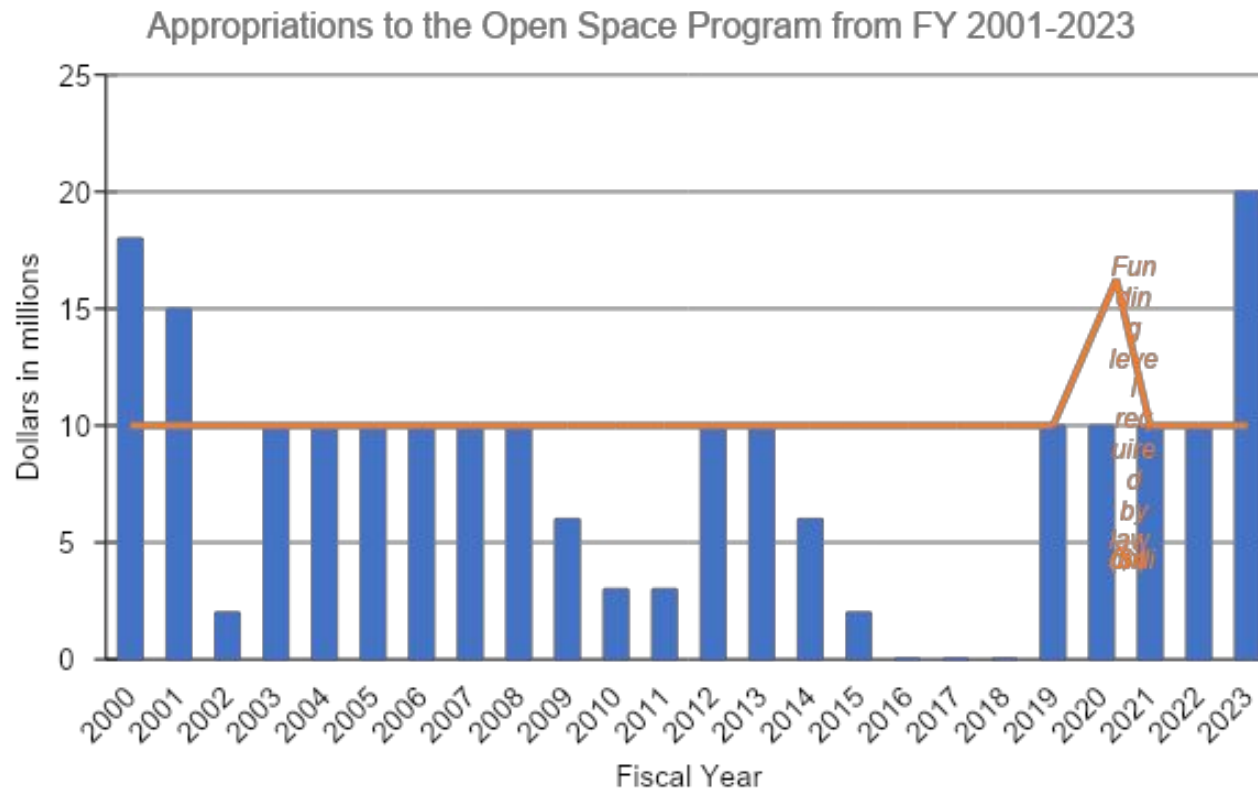
- 🌿 Created in 1990 through the Delaware Land Protection Act
- 🌿 Managed by DNREC with guidance from the Open Space Council
- 🌿 100% voluntary program and includes conservation easement and direct acquisition
- 🌿 Four agencies are eligible to use Open Space funding:
 - DNREC Division of Parks and Recreation;
 - DNREC Division of Fish and Wildlife;
 - Delaware Forest Service; and
 - Department of State's Division of Historic and Cultural Affairs.
- 🌿 As of 2021, the OSP has protected 63,899 acres throughout the state!

Open Space Funding

Land and Water Conservation Trust Fund funded by a portion of the state's realty transfer taxes (30 Del. C. Chapter 54, Subchapter II)

By law, the OSP receives \$10m each year, of which \$1m goes into an infrastructure account and the remaining \$9m becomes available for land conservation

Open Space Funding



Why should funding be increased?

1. The cost of land is higher than it was in 1990. As a result, the \$9 million in state funding can be spent on one - three properties very easily at current land prices and the problem will only get more challenging.
2. The purchasing power of \$9 million has significantly decreased due to land values increasing markedly and the intense development pressures in some parts of the state.
3. If you consider the life of the program, authorized investments in the program, and the varying levels of investments over the years, the state has under-allocated funding to this program by \$68 million.
4. Outdoor recreation and open space is important to Delawareans and for Delawareans. It is also a major economic driver and brings thousands of people to visit our state each year.

Success in 2022



Additional \$10m allocated
in FY23 for \$20m total



Focus in 2023

1. Permanently increase funding allocated to the OSP through the Delaware Code.
2. Discuss the Land Protection Act and opportunities for NGOs and municipalities to partner with the OSP to achieve our common goals.

2nd annual Conservation Day at Legislative Hall

May 10, 2023

11 AM – 4 PM

Sussex Conservation Partnership

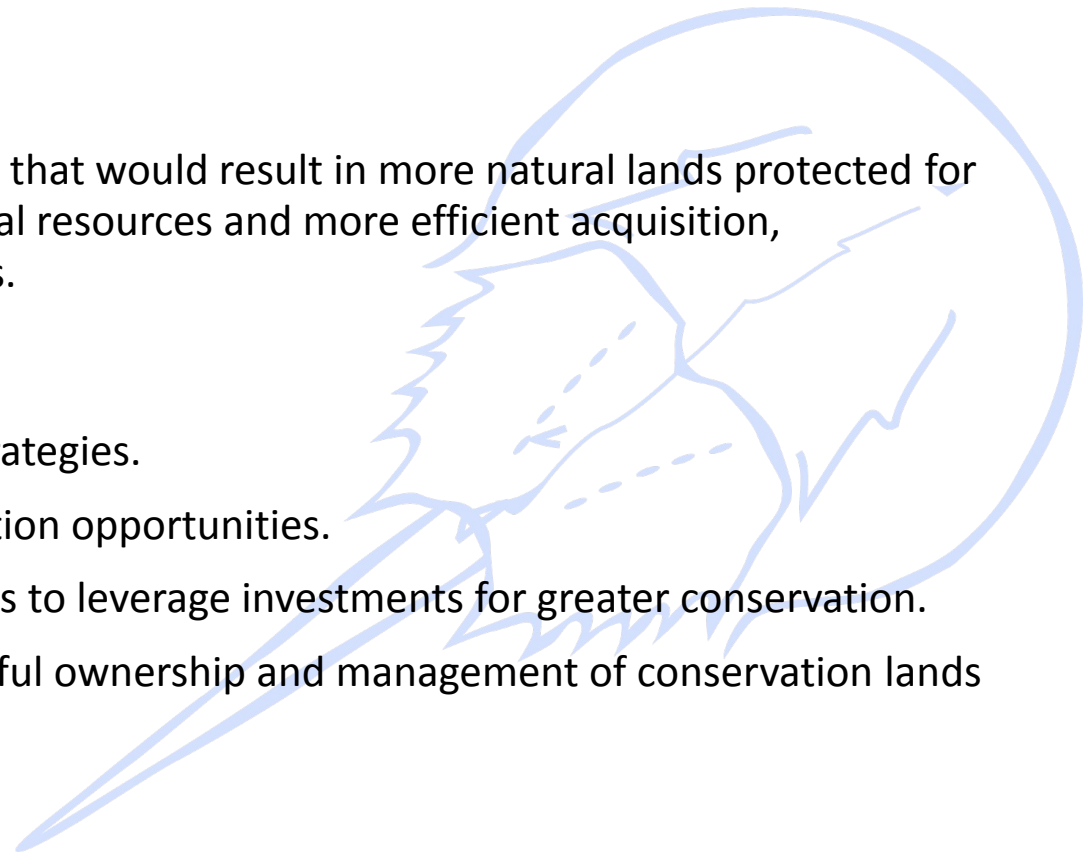
Formed in 2020

The Need:

Increased partnership within Sussex County that would result in more natural lands protected for public recreation and conservation of natural resources and more efficient acquisition, ownership, and management of these lands.

The objectives are:

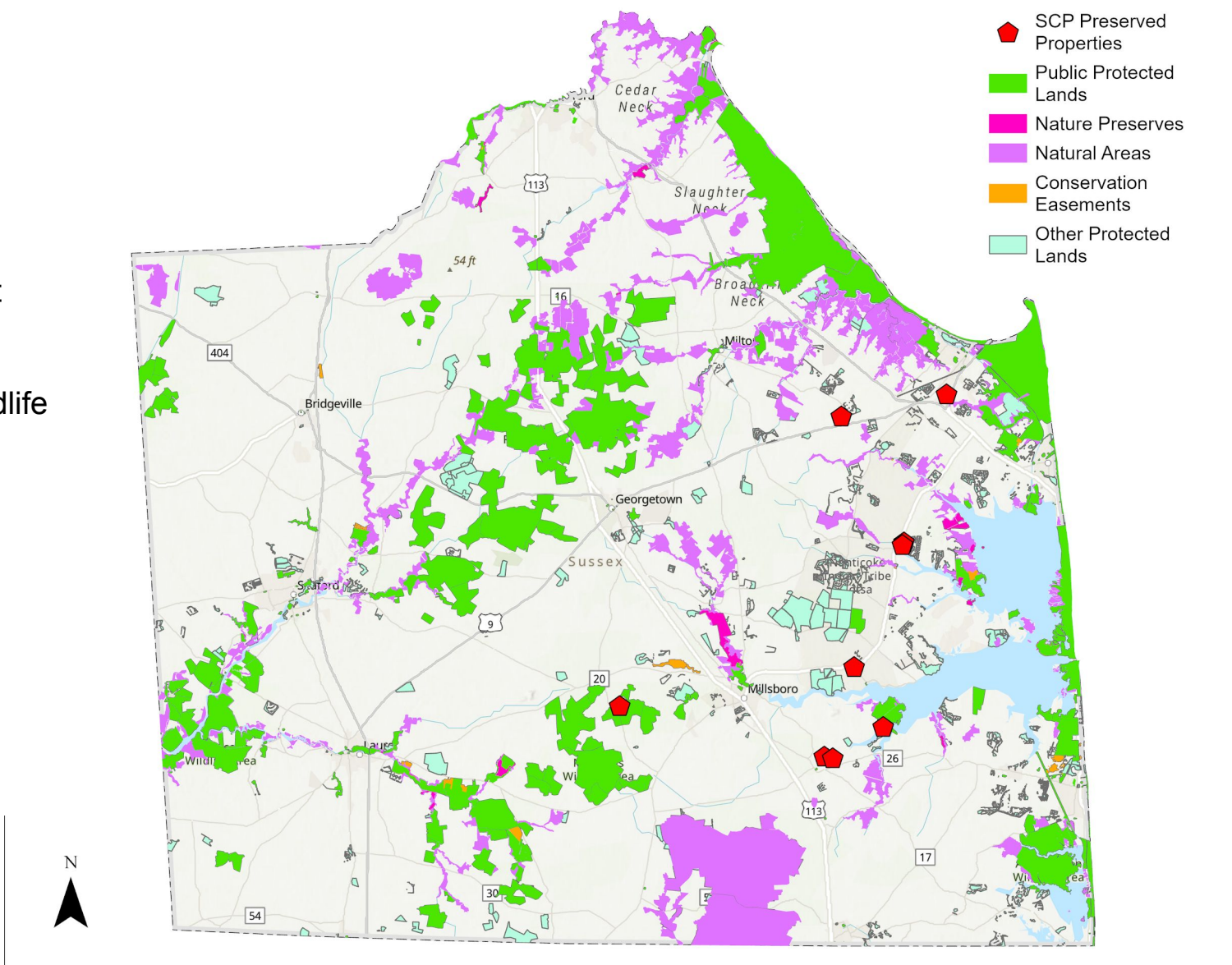
- Discuss conservation priorities and strategies.
- Identify and discuss specific conservation opportunities.
- Partner on acquisitions and easements to leverage investments for greater conservation.
- Realize the most efficient and successful ownership and management of conservation lands on a case by case basis.



343 acres protected

Partners:

- Sussex County
- Center for Inland Bays
- Sussex County Land Trust
- DNREC Div. of Parks & Recreation
- DNREC Div. of Fish & Wildlife
- The Nature Conservancy
- Delaware Wild Lands





Herring Creek Preserve
31 acres

Photo Credit: Driscoll Drones

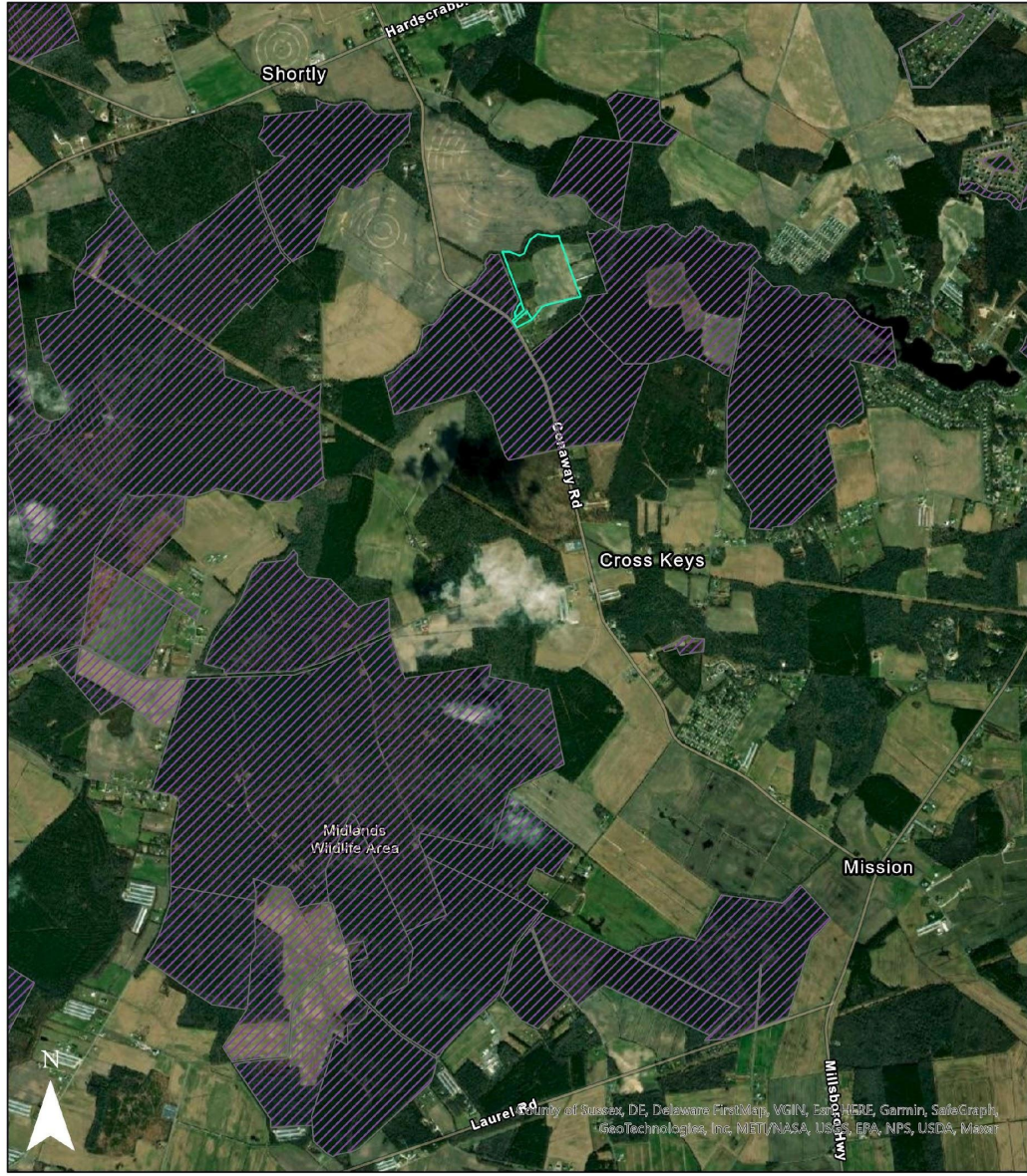
Dawson Bros
40 acres



Conaway Road
47 acres



Maxar, Microsoft, Esri Community Maps Contributors, County of Sussex, DE, Delaware FirstMap, VGIN, © OpenStreetMap, Microsoft, Esri, HERE, Garmin, SafeGraph, GeoTechnologies, Inc, METI/NASA, USGS, EPA, NPS, US Census Bureau, USDA



County of Sussex, DE, Delaware FirstMap, VGIN, Esri, HERE, Garmin, SafeGraph, GeoTechnologies, Inc, METI/NASA, USGS, EPA, NPS, USDA, Maxar

Focus in 2023

- Continue to identify and acquire land
- Explore avenues for direct outreach to landowners



Thank You

Michelle Schmidt

Director, Conservation and Watershed
Planning

mschmidt@inlandbays.org



DELAWARE CENTER FOR THE
INLAND BAYS
Research. Educate. Restore.

Get on board with the bays.
inlandbays.org

Rehoboth | Indian River | Little Assawoman